

Electronically Controlled Meter-Mix-Dispense System



- ▶ **Electronically adjust shot size (volume) and/or flow rate - on the fly**
- ▶ **Digital servo drive with closed loop position insures precision flow rate and volumes**
- ▶ **Touch screen operator interface -password protected security levels**
- ▶ **Dispense profile: electronically vary the dispense flow rate through the cycle**
- ▶ **Dispense consistently sized beads or precision ‘shots’ of mixed material**

APPLICATIONS

Potting or encapsulation utilizing the profiled flow rate to dispense a precise amount

Beads - Dispensing can be integrated with automation to produce a consistently sized bead

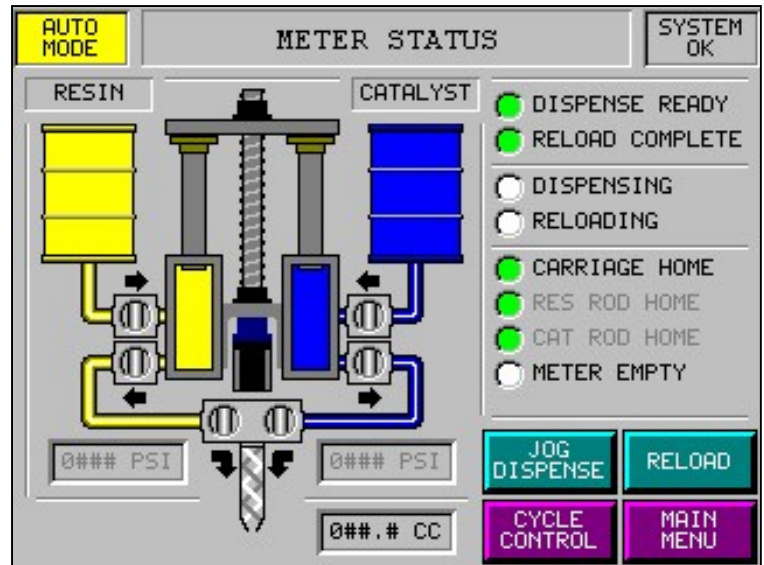
FEATURES

- For bead applications, the system accepts a 0-10v analog signal(from your automation) producing a continuously variable dispense flow rate
- For shot applications, select one of multiple preset shot profiles. A shot profile can consist of several segments, with each segment having its own volume and flow rate settings. Transitions between segments within a profile are blended, insuring smooth, uninterrupted material flow.
- Shot sizes and flow rates are adjustable through the operator interface.
- Volume monitoring verifies amount of material dispensed; usage data is collected and can be downloaded
- Auto Purge with adjustable warning and fault timers and purge volume.
- Optional footswitch or trigger for manual dispensing.
- Contact closures, wired to terminals, are provided for status interlocks to customer. Discrete interlocks from customer require contact closures for our 24V DC signals.

ServoFlo 302 Specifications



Common sense, touch-screen controls allow you to control how much and how fast the mixed material is dispensed



Electronic Controls Specifications

- Allen-Bradley MicroLogix 1500 programmable controller with enhanced processor.
- Compact, digital, integrated servo drive with closed loop position and velocity control provides precise control of flow rate and volume of material dispensed.
- Brushless servo-motor with multi-turn absolute encoder feedback, brake, and keyed output shaft. Absolute encoder provides continuous position information to the drive, eliminating the need for switches and homing routines.
- Six inch color LCD TouchScreen operator interface provides status information and full manual control of all functions. Also provides password protected screens for setup, calibration, and maintenance.

- Main disconnect switch
- “Emergency Stop” pushbutton with provision for additional customer interlock in E-Stop string.
- Fault conditions disable operation and strobe alerts operator to situation; panel can be used to diagnose and correct fault condition
- Electrical requirements: 100-240V AC, 50/60Hz, single-phase input power, 24V DC control circuit.
- Air requirements: 60 P.S.I. @ 60 cfm
- All control panel components are industrial grade, CE Marked and rated Finger-Safe.



Manufacturers of Precision Dispense Systems & Valves

45677 Helm Street • P.O. Box 701460

Plymouth, MI 48170 • USA

Phone: (734) 459-8600

Fax: (734) 459-8686

Web: SealantEquipment.com

Email: Sales@SealantEquipment.com